



DEEPWATER
BORDER LEICESTER STUD

31st Annual Ram Sale

FRIDAY 4TH OCTOBER 2024

2.00PM (SA) | Lunch & inspection from 12.00pm
ON PROPERTY | Ralph's Road, Binnum SA

Josh Dowdy 0407 642 565 Judy Dowdy 0408 642 065

**OVER
50 YEARS
OF BREEDING
SUPERIOR
GENETICS**

**150
\$SUPERBORDERS
RAMS**



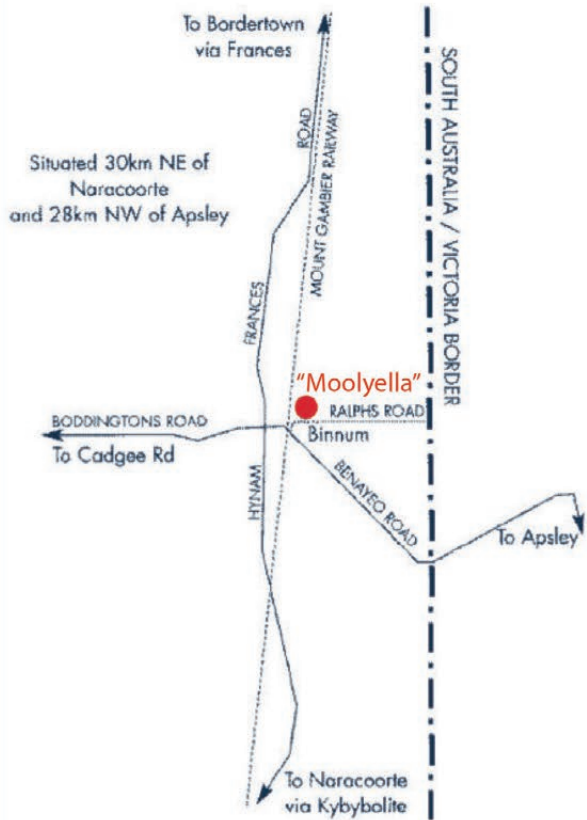
Richard Jennings
0428 616 554



Ali Haynes
0439 350 252

4% rebate to outside agents introduced in writing 24hrs prior to sale

LOCATION MAP



HEALTH STATUS

- Drenching:** The rams were drenched pre-sale with Wickert. It is recommended that you drench all stock introduced to your property.
- Vaccinations:** All rams are fully vaccinated with GlanEry (7 in 1 + B12) Scabigard used at tailing
Last GlanEry booster given on 9th. September 2024
- SHEARING:** Shorn on 16th July
The property is lice free.
- OVINE JOHNE'S DISEASE:** MN3-V or 10 points certificate no. SO16V
All the rams are OJD vaccinated.
Gudair vaccination commenced in 2006.
- OVINE BRUCELLOSIS:** Accredited since foundation of the stud in 1973.
Accreditation no.373



Find us on Google Maps
Simply search - 'Moolyella, Binnun, South Australia

Welcome to the 31st Deepwater Border Leicester Annual on property ram auction.

We are proud to offer our team of 150 high quality rams, the largest single offering of \$SuperBorder\$ in Australia.

It has been a difficult season with the lack of rain impacting upon feed availability throughout the year. We are now starting to see some Spring growth and hoping for more showers. Despite this, our rams have proven their hardiness, showing great growth and muscling.

We believe that breeding better Borders is about finding the correct genetic balance. We breed rams with fast growing progeny, whose daughters have optimum fertility and sons are well muscled to hang up well at the abattoirs.

We sadly announce John's passing. John Dowdy passed away suddenly on 17th August 2024 and will be greatly missed.

The stud was initially started as a hobby by Judy when she was a teenager, to supply the ram requirements for her family's business. Over the following years she developed an enduring love for the breed.

John often referred to the original small stud as Judy's dowry! John was instrumental in supporting the stud growing from a hobby to become the commercial enterprise it is today. It was at his instigation the annual

on property ram auction occurred and has continued for 31 years. John was keen to use genetic measurement and Deepwater Stud was one of the early participants in Lambplan in 1993. We are proud to provide customers with over 30 years of genetic history showing exceptional genetic traits. John was a founding member of the \$SuperBorder\$

group, aiming to supply easily recognised, improved Border rams across Australia.

The stud has pursued our ideals of fertility, growth, milking and carcase traits as well as visual selection.

Please check the ASBVs and indexes on the percentile report in this catalogue to help benchmark your selection of rams. The 50th Percentile index means that 2023 drop \$SuperBorder\$ must have an index over 128.7 which is a big increase from 118.8 last year.

Now is the time to invest in Deepwater genetics with confidence, preparing for the

future! We are proud of the success of our clients at the Naracoorte and Edenhope Off-shears Sales. Border Leicester first-cross are tried and true breeders of the best lambs produced in Australia.

We appreciate your support and look forward to seeing you at the sale.

The Dowdy Family



Josh: 0407 642565

Email: jdowdy@rams4ewe.com.au

Judy: 0408 642065

Go to www.rams4ewe.com.au for more information and to print more catalogues

Stud rams will be found among those catalogued. A minimum price of \$2,000 applies for rams to be registered.

SuperBorders is the brand name for Border Leicester Rams that are of high genetic merit for a first cross production system. The official SuperBorder yellow ear tags allow SuperBorder rams to be easily identified.

To qualify as a SuperBorder a Border Leicester ram must be above the 50th percentile for the breed based on the BLX index {Border Leicester Cross Index}. The 50th percentile index value is calculated based on the 15th of August LAMBPLAN run each year. It is used to determine SuperBorder rams for that selling season. The BLX Index has been developed for production systems using Border Leicester sires crossed to Merino dams to produce first cross progeny. BLX balances maintaining mature size with significant improvements in early growth and reproduction.

A higher BLX index targets animals that are more profitable in this production system.

Not all rams sold by SuperBorder members are necessarily SuperBorder quality, but are bred by committed, registered

breeders striving for genetic gain. SuperBorder rams must be structurally sound and of good breed type.

The SuperBorders group is made up of a number of studs across 5 states who work together in meeting market requirements for objectively measured maternal genetics in the Australian Lamb Industry.

SuperBorders members are industry leaders with longstanding involvement in research, trials and industry resource flocks.

First cross lambs sired by 100% SuperBorder rams may be sold as 'Bred from SuperBorders'. Special yellow pen cards and SuperBorders ear tags are available to identify these animals when sold in physical sales. Virtual yellow sale cards are also available for SuperBorders progeny sold on on line sale platforms. Please speak with us if you would like either of these marketing materials.



Percentile Report

Analysis First Cross Sire Breeds Dated 15/08/2024 Drop Year 2023



Band	BLX	BWT	PWT	AWT	MWWT	PEMD	PFAT	YGFW	WR	PWEC	MCP+
1	162.64	-0.04	14.8	18.36	2.88	2.44	1.87	18.83	0.25	-58.48	164.1
5	153.99	0.06	13.2	16.09	2.34	1.88	1.19	15.24	0.21	-50.74	156.02
10	149.13	0.11	12.41	15.11	2.05	1.56	0.84	13.46	0.18	-46	151.09
20	142.45	0.18	11.33	13.93	1.7	1.18	0.46	11.47	0.15	-39.96	143.8
30	137.74	0.22	10.56	13.06	1.47	0.88	0.22	10.11	0.13	-34.06	138.73
40	133.51	0.26	9.9	12.31	1.27	0.63	0.05	8.92	0.11	-28.2	134.48
50	128.74	0.3	9.25	11.57	1.08	0.41	-0.1	7.88	0.09	-23.7	130.13
60	122.55	0.33	8.57	10.87	0.92	0.22	-0.26	6.69	0.06	-18.17	124.44
70	117.27	0.37	7.92	10.11	0.75	0.03	-0.42	5.4	0.04	-12.18	119.46
80	113.18	0.42	7.14	9.19	0.56	-0.19	-0.61	3.88	0.01	-4.49	115.5
90	108.53	0.48	6.05	7.95	0.3	-0.49	-0.88	1.96	-0.02	3.92	111.1

Catalogue Abbreviations and Australian Sheep Breeding Values (ASBVs) explained

- ID:** Ear tag identification. Further information on each ram is available from our database if the tag number is quoted or from www.sheepgenetics.org.au/lambplan/
- SIRE:** Stud sire of ram (See table for full sire I.D). If you are marketing your first cross ewes you might select rams from the same sire for a more even line of lambs.
- DOB:** Date of birth of each ram in 2023. All the rams have been run together and size differences may be due to age differences or being raised as a multiple or single lamb.
- BT:** Birth type.
- BWT:** (Birth Weight) Estimates the genetic difference in weight at birth in kg. Our lambs are weighed at birth. Too large a lamb may cause lambing problem or too small, low survival rates.
- MWWT:** (Maternal Weaning Weight) Estimates the dam's milk production and mothering ability at 100 days (weaning) in kg.
- WWT:** (Weaning Weight in kg) Estimates the genetic difference in growth at 100 days in kg.
- PWWT:** (Post Weaning Weight in kg) Estimates the genetic difference in growth at 225 days in kg.
- PFAT:** (Post Weaning Fat depth in mm) Estimates the genetic difference in fat depth. All the rams were scanned at post weaning. After a series of difficult seasons, most of our clients like their ewes to carry some fat, using leaner terminal sires to produce ideal second-cross lambs. However, those wishing to grow out first-cross wether lambs to heavy weights may wish to select leaner rams.
- PEMD:** (Post Weaning Eye Muscle Depth in mm) Estimates the genetic difference in eye muscle.
- YGFW:** (Yearling Greasy Fleece Weight) Demonstrates the difference in fleece weight between the rams when they were shorn during the first week in August.
- MICRON:** The raw data (not a breeding value) Micron test taken from side samples prior to shearing.
- PSC:** (Post Weaning Scrotal Circumference). Rams with higher scrotal circumference at an early age will, on average, sire daughters that are more fertile. Especially relevant for breeders seeking to join first cross ewe lambs.
- WR:** This new trait replaces the NLW ASBV and measures reproductive performance. Weaning Rate measures the number of additional lambs weaned per ewe joined. Weaning rate combines the traits of conception, litter size and ewe rearing ability into a single ASBV.


INDEX: The SuperBorder\$ group require 2023 drop rams to be above an index of 128.7 to be classified as a SuperBorder.

ACC: (Accuracy) This shows the percentage of accuracy of each ASBV. Despite intensive and accurate data collection, young animals will only achieve higher degrees of accuracy when they have progeny tested and recorded in Lambplan.



		2023																			INDEX	INDEX				
LOT	TAG	DOB	SIRE	BT	BWT	acc	WWT	acc	MWWT	acc	PWWT	acc	PFAT	acc	PEMD	acc	YFD	acc	YGFW	acc	PSC	acc	WR	acc	BL X	MCP+
1	230259	4-Aug	DEEP190333	1	0.3	62	6.0	69	1.2	50	10.1	67	-0.8	65	0.2	63	1.2	52	6.9	53	3.4	58	17	30	132.7	131.3
2	230154	30-Jul	DEEP170531	1	0.3	64	6.8	69	0.7	56	10.4	67	-0.4	64	0.4	62	1.6	53	7.7	56	2.8	60	12	39	129.6	131.0
Notes:															Buyer:					Price: \$						
3	230043	26-Jul	GLEN180027	2	0.3	61	6.1	65	1.7	54	10.5	65	0.4	63	0.5	61	1.5	53	5.8	54	3.2	57	13	31	133.0	132.9
4	230006	23-Jul	DEEP170531	1	0.2	64	6.0	70	0.9	58	9.9	69	0.2	67	0.6	65	1.7	56	7.7	57	3.3	60	16	40	134.9	134.5
Notes:															Buyer:					Price: \$						
5	230226	3-Aug	DEEP210564	1	0.1	59	4.3	67	0.7	44	7.0	65	-0.1	60	2.1	57			3.1	47	1.9	54	11	29	134.7	137.1
6	230389	7-Aug	DEEP190333	1	0.1	63	6.0	69	1.4	52	10.0	67	0.2	64	1.8	62	2.1	55	5.8	56	3.6	59	12	31	136.8	138.9
Notes:															Buyer:					Price: \$						
7	230285	5-Aug	DEEP190333	1	0.1	63	5.3	70	1.0	53	8.6	68	0.7	66	1.2	64	1.4	52	5.3	54	2.8	59	13	33	133.0	133.7
8	230230	3-Aug	DEEP200846	2	0.2	63	5.3	69	1.1	46	8.9	66	0.2	62	1.5	60	2.1	55	7.8	54	2.7	55	15	30	138.2	138.5
Notes:															Buyer:					Price: \$						
9	230036	26-Jul	DEEP170531	2	0.3	64	6.1	70	0.6	59	9.4	69	-0.1	67	0.7	65	1.8	55	6.4	57	2.8	60	16	41	132.7	132.9
10	230206	3-Aug	DEEP190333	2	0.2	59	6.0	69	1.2	52	10.7	67	0.4	63	1.5	61	1.6	53	5.2	54	3.9	58	17	30	137.5	137.9
Notes:															Buyer:					Price: \$						
11	230080	28-Jul	DEEP200846	2	0.4	59	7.0	68	1.0	43	10.6	66	-0.5	63	0.7	61	1.3	54	6.0	52	2.8	54	17	28	139.7	140.2
12	230187	1-Aug	DEEP170531	2	0.3	64	6.2	70	0.9	58	10.1	68	0.2	65	1.1	64	1.6	55	6.9	57	3.5	61	15	40	136.6	137.7
Notes:															Buyer:					Price: \$						
13	230215	3-Aug	DEEP190333	2	0.2	63	6.5	69	1.0	53	10.1	67	0.1	64	1.3	62	2.3	52	7.3	55	3.5	58	14	34	138.2	140.0
14	230264	4-Aug	DEEP200846	2	0.3	59	6.0	69	1.0	42	9.5	66	0.4	63	1.5	61	1.7	53	6.8	52	2.4	55	13	32	138.0	139.7
Notes:															Buyer:					Price: \$						
15	230733	25-Aug	DEEP200846	1	0.1	62	5.3	69	0.9	45	9.1	66	-0.2	62	1.2	60	2.0	54	7.1	53	2.9	55	16	32	134.6	134.6
16	230256	4-Aug	DEEP200846	2	0.2	59	5.0	69	0.1	46	8.6	66	0.6	62	1.5	60	1.8	55	6.3	54	2.7	55	14	31	129.7	131.6
Notes:															Buyer:					Price: \$						

 = top 20% for breed

 = top 10% for breed

2023																		INDEX	INDEX							
LOT	TAG	DOB	SIRE	BT	BWT	acc	WWT	acc	MWWT	acc	PWWT	acc	PFAT	acc	PEMD	acc	YFD	acc	YGFW	acc	PSC	acc	WR	acc	BL X	MCP+
17	230274	5-Aug	INV190281	2	0.3	65	8.7	68	1.6	62	13.5	68	-0.3	67	1.4	66	2.4	62	2.2	64	4.8	62	11	51	145.6	149.8
18	230492	10-Aug	DEEP170531	2	0.4	60	7.1	69	1.6	56	10.9	68	0.0	64	0.4	62	1.2	54	5.4	56	3.2	59	18	38	141.6	140.9
Notes:												Buyer:										Price: \$				
19	230879	5-Sep	JOHN190622	1	0.3	59	5.9	68	0.6	48	9.3	67	0.5	64	1.1	62	2.7	54	9.9	55	2.2	57	11	29	131.6	133.6
20	230332	6-Aug	DEEP200846	2	0.1	63	5.6	70	0.6	45	9.5	68	0.2	64	1.9	62	1.9	54	6.9	53	2.7	56	15	30	140.6	142.9
Notes:												Buyer:										Price: \$				
21	230814	24-Aug	GLEN180012	2	0.1	64	6.2	69	2.9	56	9.6	68	0.3	66	1.1	64	2.0	55	4.4	57	3.1	60	9	35	138.7	138.7
22	230038	26-Jul	GLEN180027	2	0.3	62	6.4	69	1.5	52	10.5	67	-0.1	65	0.1	63	0.9	52	5.2	53	3.2	58	18	31	134.1	132.0
Notes:												Buyer:										Price: \$				
23	230191	2-Aug	GLEN180027	1	0.4	62	6.8	68	1.4	54	10.6	66	-0.6	63	0.3	61	0.6	53	3.9	55	2.9	58	17	33	136.3	135.8
24	230721	17-Aug	DEEP210340	1	0.3	61	4.8	69	0.1	44	8.2	67	0.6	63	1.2	61			14.7	49	2.3	57	10	31	128.9	130.9
Notes:												Buyer:										Price: \$				
25	230683	15-Aug	JOHN190622	1	0.4	62	7.1	69	1.2	47	10.0	67	-0.3	65	1.0	63	2.6	54	10.2	54	2.4	58	11	28	136.7	138.6
26	230623	13-Aug	DEEP210632	2	0.3	54	5.1	67	1.0	48	8.5	66	1.1	63	1.5	60			-1.0	46	2.4	56	17	33	144.1	145.4
Notes:												Buyer:										Price: \$				
27	230410	8-Aug	DEEP210564	1	0.1	58	4.6	67	1.8	45	6.8	65	-0.1	61	1.1	58			1.2	48	1.7	54	12	31	137.4	137.3
28	230250	4-Aug	DEEP210340	2	0.2	61	5.1	69	0.6	49	8.4	66	0.4	61	1.2	58			11.4	50	2.7	55	11	31	129.7	131.2
Notes:												Buyer:										Price: \$				
29	230522	11-Aug	DEEP200846	2	0.2	59	5.9	68	1.5	42	9.4	66	0.0	63	1.4	61	1.7	53	6.2	52	2.8	54	11	29	139.1	141.0
30	230090	29-Jul	GLEN180027	2	0.4	59	6.0	70	0.8	56	9.6	68	-0.2	65	0.7	63	1.8	54	6.4	56	2.3	59	21	33	138.4	137.0
Notes:												Buyer:										Price: \$				
31	230494	10-Aug	DEEP170531	1	0.3	64	7.2	69	1.1	55	11.3	68	-0.4	66	0.6	64	1.7	55	8.2	56	3.0	60	17	38	145.3	146.6
32	230557	12-Aug	DEEP190333	2	0.2	62	5.8	69	1.4	52	8.6	67	-0.1	65	1.2	63	1.4	53	6.9	56	3.3	60	17	36	141.3	140.8
Notes:												Buyer:										Price: \$				

■ = top 20% for breed

□ = top 10% for breed

		2023																				INDEX	INDEX			
LOT	TAG	DOB	SIRE	BT	BWT	acc	WWT	acc	MWWT	acc	PWWT	acc	PFAT	acc	PEMD	acc	YFD	acc	YGFW	acc	PSC	acc	WR	acc	BL X	MCP+
33	230137	31-Jul	JOHN190622	2	0.4	58	7.7	69	1.5	48	11.1	67	-0.1	65	1.3	63	2.8	56	11.6	55	3.1	58	13	29	143.9	145.9
34	230759	20-Aug	JOHN190622	1	0.3	63	6.3	69	0.9	50	9.5	67	-0.1	64	0.8	62	2.6	57	10.5	56	2.3	59	13	29	136.5	137.3
Notes:															Buyer:					Price: \$						
35	230235	3-Aug	DEEP190333	2	0.4	63	7.1	69	1.6	50	11.1	67	-0.5	65	0.8	63	1.4	52	5.3	54	3.5	58	14	30	133.0	133.5
36	230017	25-Jul	DEEP170531	1	0.1	63	5.8	70	1.2	58	8.9	69	0.9	67	1.4	65	1.7	57	2.3	58	3.1	60	14	39	136.8	137.7
Notes:															Buyer:					Price: \$						
37	230153	31-Jul	DEEP190333	2	0.2	63	6.1	69	1.1	51	8.9	68	-0.3	65	1.7	63	1.6	53	7.7	55	3.1	59	14	34	138.7	139.8
38	230040	26-Jul	DEEP190333	2	0.1	63	4.6	70	1.2	54	8.0	69	1.7	66	2.6	64	2.0	53	2.7	55	3.2	59	14	34	136.2	137.7
Notes:															Buyer:					Price: \$						
39	230794	22-Aug	GLEN180012	3	0.2	62	6.3	66	3.0	57	9.8	66	-0.4	65	0.6	63	2.0	54	4.4	57	2.9	59	12	36	138.5	137.0
40	230303	6-Aug	DEEP190333	1	0.3	63	5.2	69	1.3	51	8.5	68	1.1	65	1.4	63	1.5	52	5.3	55	3.1	59	13	33	134.7	135.1
Notes:															Buyer:					Price: \$						
41	230446	9-Aug	DEEP210564	1	0.2	55	6.7	67	1.3	45	10.1	65	-0.6	61	0.9	58			6.7	48	2.9	53	10	30	133.2	135.4
42	230075	28-Jul	DEEP190333	2	0.3	60	6.2	69	1.5	52	9.1	68	-0.7	66	1.1	64	1.8	54	4.3	55	3.0	59	9	35	129.4	131.4
Notes:															Buyer:					Price: \$						
43	230590	13-Aug	GLEN180027	2	0.4	63	6.7	69	1.2	54	10.5	67	-0.5	65	0.3	62	0.9	53	4.3	55	2.7	59	20	34	139.9	138.7
44	230582	13-Aug	JOHN190622	2	0.4	62	5.9	68	1.0	49	9.0	66	0.0	63	0.9	61	2.2	54	9.0	55	1.8	58	14	31	139.0	139.9
Notes:															Buyer:					Price: \$						
45	230238	4-Aug	JOHN190622	1	0.3	59	6.6	69	1.5	50	9.3	67	-0.3	64	1.0	62	2.1	54	7.7	56	1.8	58	11	30	140.3	141.9
46	230453	9-Aug	DEEP210564	1	0.0	59	5.0	67	1.3	43	7.3	65	-0.1	62	1.7	59			0.0	47	2.3	55	15	29	140.6	141.2
Notes:															Buyer:					Price: \$						
47	230665	15-Aug	GLEN18027	2	0.4	62	5.1	68	1.3	55	8.6	66	0.2	63	1.0	61	1.2	53	4.4	53	2.0	58	14	33	134.9	134.8
48	230666	15-Aug	GLEN180027	2	0.4	62	5.1	68	1.3	55	8.6	66	0.5	63	0.9	61	1.2	53	4.2	55	2.0	58	14	33	134.4	134.2
Notes:															Buyer:					Price: \$						

■ = top 20% for breed

□ = top 10% for breed

2023																				INDEX	INDEX					
LOT	TAG	DOB	SIRE	BT	BWT	acc	WWT	acc	MWWT	acc	PWWT	acc	PFAT	acc	PEMD	acc	YFD	acc	YGFW	acc	PSC	acc	WR	acc	BL X	MCP+
49	230844	28-Aug	GLEN180012	2	0.2	63	6.7	69	2.1	56	10.3	68	-1.3	65	0.6	63	2.0	54	7.7	56	2.5	59	10	36	136.0	137.0
50	230622	13-Aug	DEEP170531	2	0.3	64	6.1	70	0.6	59	9.9	69	-0.2	66	0.0	64	1.1	57	3.8	58	3.3	61	18	39	132.1	131.6
Notes:												Buyer:										Price: \$				
51	230041	26-Jul	DEEP190333	2	0.2	63	5.8	70	1.2	54	9.5	69	1.3	66	2.1	64	2.1	53	4.5	55	3.7	59	14	34	134.8	136.5
52	230840	27-Aug	JOHN190622	1	0.4	62	5.7	68	1.0	51	8.7	67	0.1	64	0.5	62	2.2	53	8.8	54	1.9	58	9	29+	131.8	133.6
Notes:												Buyer:										Price: \$				
53	230335	6-Aug	DEEP200846	2	0.2	64	4.8	70	0.2	47	8.4	68	0.7	65	1.5	63	2.3	56	8.2	55	2.5	57	18	33	135.8	136.0
54	230664	15-Aug	DEEP210340	1	0.2	61	4.1	69	0.4	46	6.6	67	1.4	62	1.4	60			11.9	47	1.6	55	11	30	131.5	132.6
Notes:												Buyer:										Price: \$				
55	230507	31-Aug	GLEN210098	1	0.2	63	8.1	69	2.6	47	12.3	68	0.4	65	0.8	63			0.9	58	3.3	59	13	34	152.1	153.5
56	230146	31-Jul	JOHN190622	2	0.4	62	6.5	69	1.6	48	10.1	67	0.8	65	0.9	62	2.0	54	8.0	54	2.6	58	15	27	139.6	139.1
Notes:												Buyer:										Price: \$				
57	230216	3-Aug	DEEP190333	2	0.2	63	6.0	69	1.0	53	9.0	67	0.4	64	1.6	62	2.2	52	5.7	55	3.0	58	14	34	141.1	143.1
58	230110	29-Jul	DEEP190333	2	0.2	60	5.1	70	1.0	51	7.8	68	0.4	64	1.6	62	1.5	52	4.5	55	2.2	58	18	32	141.1	141.1
Notes:												Buyer:										Price: \$				
59	230326	6-Aug	DEEP210564	2	0.1	58	6.2	67	0.9	43	9.7	65	-0.7	61	1.2	58			4.2	46	3.0	54	14	27	134.0	135.7
60	230133	30-Jul	DEEP200846	2	0.3	59	5.7	69	0.5	42	8.6	67	0.1	63	1.0	61	1.8	53	8.5	52	1.6	54	15	28	138.7	139.9
Notes:												Buyer:										Price: \$				
61	230147	30-Jul	DEEP210340	2	0.2	58	4.3	69	0.7	45	7.4	66	0.6	61	1.1	58			10.4	49	2.1	55	12	28	130.8	130.9
62	230432	8-Aug	DEEP190333	1	0.2	63	5.3	69	0.9	51	8.2	67	0.2	65	1.2	62	1.5	53	4.2	55	3.1	59	14	36	133.3	134.0
Notes:												Buyer:										Price: \$				
63	230884	7-Aug	JOHN190622	2	0.3	61	5.1	68	0.6	48	8.1	66	-0.1	64	0.9	62	2.6	55	10.0	54	1.5	58	10	36	133.2	133.4
64	230160	30-Jul	DEEP200846	1	0.4	62	6.3	69	0.4	44	9.0	66	-0.6	62	1.0	60	1.7	53	8.4	53	2.4	55	12	31	133.3	135.7
Notes:												Buyer:										Price: \$				

■ = top 20% for breed

□ = top 10% for breed

		2023																				INDEX	INDEX			
LOT	TAG	DOB	SIRE	BT	BWT	acc	WWT	acc	MWWT	acc	PWWT	acc	PFAT	acc	PEMD	acc	YFD	acc	YGFW	acc	PSC	acc	WR	acc	BL X	MCP+
65	230189	2-Aug	DEEP170531	2	0.2	64	6.1	69	0.3	56	9.8	67	0.9	64	1.3	63	1.8	54	4.5	56	3.4	60	10	39	131.5	135.1
66	230456	9-Aug	GLEN180027	1	0.3	63	4.9	69	0.7	54	8.0	67	-0.1	63	1.0	61	0.4	52	3.3	54	1.7	58	17	32	134.8	134.2
Notes:													Buyer:										Price: \$			
67	230388	7-Aug	GLEN210098	2	0.3	64	6.3	70	1.2	50	10.5	69	0.5	66	1.0	65			0.5	59	2.0	60	17	35	148.0	148.9
68	230478	10-Aug	DEEP200846	2	0.4	62	6.0	68	0.7	40	9.2	66	0.9	63	2.0	61	2.3	53	8.9	52	2.3	55	15	28	144.1	146.4
Notes:													Buyer:										Price: \$			
69	230358	7-Aug	JOHN190622	2	0.3	62	5.8	69	1.2	49	9.1	67	0.5	65	1.5	62	2.6	53	8.5	54	2.0	58	12	28	138.7	140.6
70	230799	23-Aug	GLEN180012	3	0.2	59	5.3	68	2.3	55	9.3	67	0.1	64	1.5	62	1.7	55	2.5	55	2.4	58	13	34	140.0	140.1
Notes:													Buyer:										Price: \$			
71	230493	10-Aug	DEEP170531	2	0.3	60	5.8	69	1.6	56	9.2	68	-0.2	64	0.3	62	0.9	54	4.3	56	2.6	59	18	38	139.0	137.1
72	230719	17-Aug	GLEN180027	2	0.3	58	5.3	64	1.1	51	9.2	65	1.2	64	1.1	62	1.3	52	3.3	54	2.4	57	18	33	138.4	137.5
Notes:													Buyer:										Price: \$			
73	230461	9-Aug	JOHN190622	2	0.3	62	5.0	69	0.5	52	7.8	68	1.6	65	1.6	63	2.9	55	8.4	56	1.9	59	16	30	139.3	140.0
74	230024	26-Jul	DEEP200846	2	0.2	63	4.6	69	0.8	44	7.6	66	1.4	62	2.2	60	1.5	53	2.3	51	2.2	55	18	28	143.8	144.7
Notes:													Buyer:										Price: \$			
75	230162	30-Jul	GLEN180027	3	0.3	60	6.3	69	0.9	54	10.1	67	-0.1	63	1.3	61	1.1	53	5.1	55	2.3	58	17	33	138.3	139.2
76	230063	28-Jul	DEEP210340	1	0.1	62	4.6	69	0.2	47	7.7	66	-0.3	61	0.7	59			11.1	51	2.2	55	14	33	129.7	129.8
Notes:													Buyer:										Price: \$			
77	230628	15-Aug	DEEP210340	1	0.2	60	5.0	68	0.5	43	8.3	65	0.7	62	1.6	60			12.3	48	2.1	54	8	33	131.9	134.7
78	230207	2-Aug	DEEP200846	2	0.3	63	5.2	70	0.4	45	8.5	67	0.4	62	1.8	60	2.1	52	7.9	52	2.0	55	14	30	133.1	135.0
Notes:													Buyer:										Price: \$			
79	230313	5-Aug	DEEP210340	2	0.2	60	3.6	69	0.5	46	6.3	66	0.8	61	1.3	58			9.6	49	1.2	55	10	28	129.4	130.6
80	230407	8-Aug	JOHN190622	1	0.4	62	6.6	69	0.4	49	9.7	67	-0.5	63	0.7	61	2.5	54	11.4	54	2.4	58	8	29	128.6	131.7
Notes:													Buyer:										Price: \$			

■ = top 20% for breed

□ = top 10% for breed

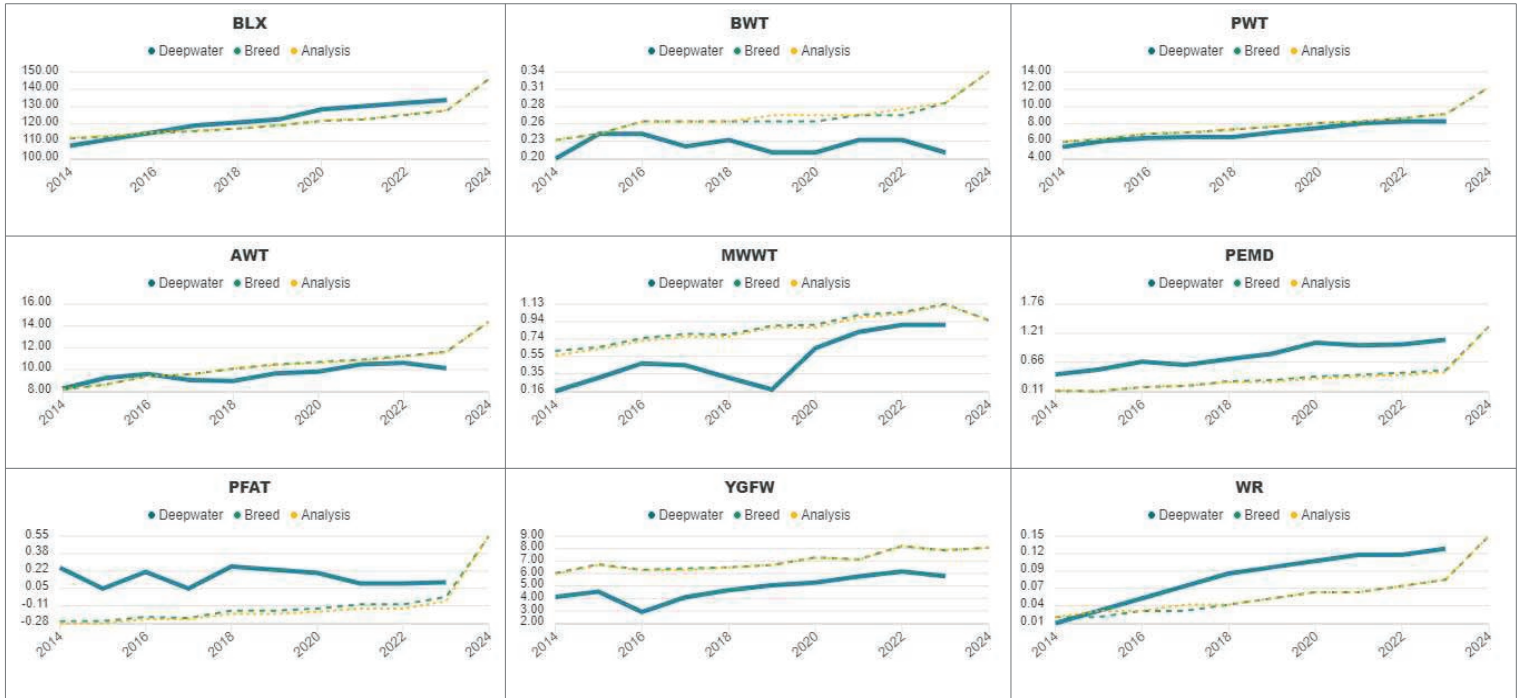
		2023																INDEX	INDEX							
LOT	TAG	DOB	SIRE	BT	BWT	acc	WWT	acc	MWWT	acc	PWWT	acc	PFAT	acc	PEMD	acc	YFD	acc	YGFW	acc	PSC	acc	WR	acc	BL X	MCP+
81	230371	7-Aug	INV190281	2	0.1	63	6.5	70	0.8	60	10.3	69	-0.2	66	2.0	64	1.9	60	1.1	62	4.4	61	14	48	146.2	149.6
82	230071	28-Jul	DEEP170531	1	0.2	65	5.9	71	1.0	58	8.9	70	0.1	68	1.0	66	1.3	55	2.7	58	2.2	62	16	41	139.3	140.0
Notes:															Buyer:					Price: \$						
83	230503	10-Aug	JOHN190622	2	0.4	59	7.2	69	1.1	47	10.4	67	-0.1	65	1.6	63	2.6	54	9.4	54	2.3	58	12	28	141.3	144.2
84	230711	17-Aug	DEEP170531	2	0.3	59	7.2	63	1.3	56	10.6	63	-0.2	61	0.5	60	1.8	54	8.2	57	3.0	57	13	40	138.5	139.7
Notes:															Buyer:					Price: \$						
85	230675	15-Aug	DEEP190333	2	0.3	63	5.7	69	1.0	50	9.6	67	0.1	65	1.0	63	1.5	52	6.1	54	3.8	59	13	33	131.5	132.3
86	230563	12-Aug	DEEP210564	2	0.1	58	4.5	68	1.5	41	8.0	65	1.2	62	2.3	60			-0.4	46	2.8	54	13	27	139.8	141.6
Notes:															Buyer:					Price: \$						
87	230306	6-Aug	GLEN180027	2	0.3	58	5.2	69	0.7	54	8.3	67	0.3	65	1.2	62	0.7	51	4.1	53	1.9	58	19	32	139.9	139.4
88	230117	28-Jul	DEEP210340	2	0.3	58	5.1	69	0.7	45	7.9	66	0.4	61	1.4	58			8.2	48	1.8	54	12	27	135.4	137.2
Notes:															Buyer:					Price: \$						
89	230350	6-Aug	DEEP170531	2	0.2	64	5.3	69	0.7	56	7.8	67	0.0	64	1.0	62	1.0	53	3.8	56	2.0	59	14	39	135.4	136.1
90	230883	7-Aug	JOHN190622	2	0.3	61	4.8	68	0.6	48	7.7	66	-0.2	64	0.8	62	2.4	55	9.6	54	1.2	58	14	28	133.2	133.2
Notes:															Buyer:					Price: \$						
91	230212	3-Aug	DEEP210564	2	0.1	55	4.0	67	0.6	46	6.5	65	0.7	61	1.6	58			1.5	48	2.4	54	11	30	131.2	132.8
92	230527	10-Aug	LINT210748	1	0.2	63	5.9	69	0.3	46	10.6	68	0.4	65	1.1	63			10.6	57	3.5	56	18	32	136.3	136.7
Notes:															Buyer:					Price: \$						
93	230391	7-Aug	GLEN210098	3	0.3	64	6.7	69	1.9	50	10.8	68	2.1	66	1.2	64			-0.3	58	3.1	60	19	37	154.6	154.7
94	230398	7-Aug	JOHN190622	1	0.3	62	6.6	68	1.0	47	9.4	66	-0.5	63	0.9	61	2.3	53	10.8	54	2.2	57	14	28	139.5	140.4
Notes:															Buyer:					Price: \$						
95	230447	9-Aug	DEEP170531	2	0.2	64	5.5	69	1.1	59	8.4	68	0.1	65	0.7	63	1.2	56	2.9	57	2.4	60	17	39	138.0	137.6
96	230299	5-Aug	DEEP170531	3	0.4	63	6.6	69	1.2	57	9.1	68	-0.5	65	0.5	63	1.3	54	4.6	57	2.6	60	15	40	138.6	138.8
Notes:															Buyer:					Price: \$						

■ = top 20% for breed

□ = top 10% for breed

Report: Genetic Trends
Analysis: FIRST CROSS SIRE BREEDS
Analysis date: 15/09/2024
Flock code: 023626
Flock name: DEEPWATER

Total animals by drop



Reports are prepared using data supplied by breeders and/or accredited operators. We cannot guarantee the accuracy of this data. ASBV's are designed to estimate genetic merit of animals from the data supplied. The reports are provided to assist breeders but no liability is accepted for the outcome resulting from the use of this information.



		2023																INDEX	INDEX							
LOT	TAG	DOB	SIRE	BT	BWT	acc	WWT	acc	MWWT	acc	PWWT	acc	PFAT	acc	PEMD	acc	YFD	acc	YGFW	acc	PSC	acc	WR	acc	BL X	MCP+
97	230862	30-Aug	DEEP200846	1	0.3	61	5.3	68	0.6	42	8.3	66	-0.3	63	0.9	61	1.0	53	2.3	51	1.7	54	15	28	136.8	138.1
98	230119	30-Jul	DEEP210340	2	0.3	62	5.0	69	0.3	47	7.8	67	0.2	61	0.9	58			13.0	49	2.0	57	14	29	134.8	135.1
Notes:															Buyer:					Price: \$						
99	230444	9-Aug	GLEN180027	2	0.3	63	5.4	69	0.7	55	9.4	67	0.2	65	1.4	63	1.8	52	3.1	55	2.4	59	17	33	138.2	139.3
100	230524	11-Aug	DEEP210340	1	0.2	57	4.8	68	0.2	41	7.5	65	0.2	61	1.5	59			12.3	47	1.7	54	13	28	134.9	136.3
Notes:															Buyer:					Price: \$						
101	230655	14-Aug	DEEP210564	2	0.2	58	5.3	67	1.4	42	7.6	65	-1.1	62	0.0	59			4.1	46	2.3	54	14	28	130.6	128.8
102	230287	5-Aug	JOHN190622	2	0.3	59	5.8	69	0.2	51	8.9	68	-0.1	65	1.4	63	2.1	53	7.8	55	1.9	58	12	30	135.1	138.0
Notes:															Buyer:					Price: \$						
103	230301	5-Aug	DEEP210340	2	0.1	61	3.2	69	0.6	46	5.8	66	0.9	60	1.4	58			10.4	47	1.4	54	14	31	134.7	134.4
104	230753	18-Aug	DEEP210340	2	0.3	60	4.5	68	0.5	42	7.0	65	0.0	60	0.5	58					1.5	53	15	24	131.4	129.9
Notes:															Buyer:					Price: \$						
105	230076	28-Jul	DEEP190333	2	0.2	64	5.2	70	0.7	52	8.5	68	-0.1	66	1.1	64	1.5	53	7.2	56	3.5	60	14	34	128.6	128.8
106	230305	6-Aug	GLEN180027	2	0.2	63	4.7	69	1.5	54	8.2	67	0.2	63	0.8	61	1.1	54	3.1	55	1.6	58	15	31	136.0	134.9
Notes:															Buyer:					Price: \$						
107	230902	10-Sep	DEEP170521	2	0.3	56	3.9	60	0.4	46	6.6	57	0.5	53	1.1	52	1.2	52	10.0	54	1.8	50	14	36	130.4	130.2
108	230399	7-Aug	DEEP170531	2	0.3	57	6.1	64	1.0	55	9.4	64	0.5	63	0.7	61	1.0	52	5.2	54	2.9	58	14	38	133.7	134.4
Notes:															Buyer:					Price: \$						
109	230564	12-Aug	GLEN210098	1	0.3	64	7.5	70	1.4	49	11.3	69	0.1	67	0.9	65			1.2	59	2.7	60	16	36	150.1	151.6
110	230113	29-Jul	DEEP190333	2	0.3	59	5.9	69	1.0	50	8.6	68	0.4	65	1.8	63	1.7	51	5.4	53	2.5	58	16	31	144.1	145.7
Notes:															Buyer:					Price: \$						
111	230781	21-Aug	JOHN190622	2	0.4	63	7.4	69	1.1	50	10.8	67	0.0	65	0.9	63	2.4	54	9.8	56	2.5	59	14	31	140.1	141.6
112	230403	8-Aug	DEEP170531	3	0.2	64	6.3	69	1.1	57	8.7	68	-0.8	66	0.6	64	1.2	54	3.5	56	2.5	60	14	40	136.8	137.4
Notes:															Buyer:					Price: \$						

■ = top 20% for breed

□ = top 10% for breed

2023																						INDEX	INDEX
LOT	TAG	DOB	SIRE	BT	BWT _{acc}	WWT _{acc}	MWWT _{acc}	PWWT _{acc}	PFAT _{acc}	PEMD _{acc}	YFD _{acc}	YGFW _{acc}	PSC _{acc}	WR _{acc}	BL	X	MCP+						
113	230790	22-Aug	DEEP200846	2	0.3 ⁶³	5.6 ⁶⁹	0.7 ⁴⁵	8.9 ⁶⁶	0.2 ⁶²	1.1 ⁶⁰	2.4 ⁵²	8.1 ⁵³	2.4 ⁵⁵	14 ³²			136.6	137.7					
114	230535	11-Aug	GLEN180027	1	0.2 ⁶³	5.1 ⁶⁹	1.5 ⁵²	7.7 ⁶⁷	0.3 ⁶⁵	0.9 ⁶³	0.4 ⁵³	1.5 ⁵⁴	1.4 ⁵⁹	17 ³²			141.6	140.5					
Notes:										Buyer:					Price: \$								
115	230511	10-Aug	DEEP170531	2	0.2 ⁶⁴	4.6 ⁶⁹	1.0 ⁵⁸	7.5 ⁶⁸	0.1 ⁶⁵	0.8 ⁶³	1.0 ⁵⁴	3.0 ⁵⁸	2.1 ⁶⁰	15 ⁴⁰			135.1	134.5					
116	230363	7-Aug	DEEP170531	2	0.1 ⁶³	4.9 ⁶⁹	1.4 ⁵⁶	7.9 ⁶⁸	1.0 ⁶⁶	1.2 ⁶⁴	1.6 ⁵⁴	3.0 ⁵⁶	2.3 ⁶⁰	14 ³⁸			137.0	136.8					
Notes:										Buyer:					Price: \$								
117	230054	27-Jul	DEEP210564	1	-0.1 ⁵⁹	3.5 ⁶⁸	0.9 ⁴⁶	5.6 ⁶⁵	0.1 ⁶¹	1.9 ⁵⁸		-0.8 ⁴⁸	1.6 ⁵⁵	13 ²⁹			136.2	137.3					
118	230140	31-Jul	DEEP170531	1	0.1 ⁵⁹	5.4 ⁶⁹	1.7 ⁵⁶	8.7 ⁶⁸	-0.4 ⁶⁶	0.6 ⁶⁴	1.2 ⁵⁵	5.3 ⁵⁷	2.3 ⁶⁰	12 ⁴⁰			136.5	136.1					
Notes:										Buyer:					Price: \$								
119	230743	26-Aug	DEEP210564	2	0.0 ⁵⁹	5.2 ⁶⁸	0.9 ⁴⁶	7.9 ⁶⁶	-0.3 ⁶²	1.3 ⁶⁰		1.7 ⁴⁷	2.5 ⁵⁵	12 ²⁹			135.6	137.5					
120	230420	8-Aug	GLEN180027	2	0.2 ⁵⁹	3.6 ⁶⁹	2.2 ⁵⁵	6.8 ⁶⁷	1.4 ⁶⁴	1.2 ⁶²	0.1 ⁵⁴	-2.3 ⁵⁵	2.1 ⁵⁹	17 ³⁴			137.8	134.6					
Notes:										Buyer:					Price: \$								
121	230857	29-Aug	GLEN180012	1	-0.1 ⁶³	3.2 ⁷⁰	1.5 ⁵⁸	6.3 ⁶⁸	0.3 ⁶⁵	1.5 ⁶³	2.3 ⁶¹	5.3 ⁵⁸	1.9 ⁶⁰	14 ³⁶			137.5	136.3					
122	230380	7-Aug	DEEP210340	2	0.2 ⁵⁹	3.7 ⁶⁹	-0.1 ⁴⁸	6.2 ⁶⁷	0.3 ⁶¹	0.7 ⁵⁹		10.7 ⁴⁹	1.3 ⁵⁵	18 ³²			132.0	130.4					
Notes:										Buyer:					Price: \$								
123	230253	4-Aug	JOHN190622	2	0.1 ⁶³	4.3 ⁶⁹	0.3 ⁵²	6.8 ⁶⁸	0.3 ⁶⁵	1.8 ⁶³	1.6 ⁵⁵	8.2 ⁵⁶	1.1 ⁵⁹	11 ³¹			132.8	134.7					
124	230053	27-Jul	JOHN190622	2	0.3 ⁶²	4.5 ⁶⁸	0.8 ⁵⁰	7.3 ⁶⁷	0.2 ⁶⁴	1.3 ⁶²	2.5 ⁵³	6.7 ⁵⁴	1.5 ⁵⁸	11 ³¹			132.3	133.5					
Notes:										Buyer:					Price: \$								
125	230196	2-Aug	DEEP200846	2	0.3 ⁶²	5.0 ⁶⁹	0.4 ⁴³	7.4 ⁶⁶	-0.1 ⁶¹	1.0 ⁶⁰	1.4 ⁵³	5.4 ⁵²	2.0 ⁵⁵	13 ³¹			132.2	133.2					
126	230029	26-Jul	JOHN190622	2	0.4 ⁶⁰	6.6 ⁶⁹	-0.2 ⁵⁰	9.3 ⁶⁸	-0.5 ⁶⁵	1.0 ⁶³	1.9 ⁵³	10.6 ⁵⁴	1.7 ⁵⁸	13 ³⁰			136.2	139.4					
Notes:										Buyer:					Price: \$								
127	230393	7-Aug	INV190801	1	0.3 ⁶⁴	7.8 ⁶⁹	0.8 ⁵⁸	12.4 ⁶⁸	-0.4 ⁶⁴	1.5 ⁶²	2.4 ⁵⁹	11.5 ⁵⁹	3.7 ⁵⁹	16 ⁴¹			145.6	148.4					
128	230375	7-Aug	INV190281	2	0.1 ⁶⁵	7.0 ⁷⁰	1.1 ⁶⁰	11.2 ⁶⁹	0.1 ⁶⁶	1.9 ⁶⁴	2.5 ⁵⁸	1.7 ⁶¹	4.0 ⁶¹	13 ⁴⁷			144.8	148.4					
Notes:										Buyer:					Price: \$								

■ = top 20% for breed

□ = top 10% for breed

		2023																				INDEX	INDEX					
LOT	TAG	DOB	SIRE	BT	BWT	acc	WWT	acc	MWWT	acc	PWWT	acc	PFAT	acc	PEMD	acc	YFD	acc	YGFW	acc	PSC	acc	WR	acc	BL X	MCP+		
129	230258	4-Aug	INV190801	1	0.3	61	6.7	69	0.1	58	10.7	68	0.2	65	1.3	63	2.3	56	13.1	59	2.7	59	18	43	146.0	148.1		
130	230349	6-Aug	DEEP190333	2	0.2	62	6.0	68	1.1	50	8.8	66	-0.1	58	1.1	57	1.4	53	4.6	55	2.9	57	16	33	139.9	140.4		
Notes:															Buyer:										Price: \$			
131	230571	12-Aug	DEEP170531	2	0.2	64	4.4	70	0.5	60	7.3	69	0.4	66	1.3	64	1.4	56	4.2	59	2.1	61	16	41	137.2	137.8		
132	230533	11-Aug	DEEP170531	2	0.3	63	5.7	66	1.5	55	8.4	66	-0.3	65	0.9	64	1.2	55	5.2	56	2.0	60	17	40	141.0	140.0		
Notes:															Buyer:										Price: \$			
133	230714	17-Aug	JOHN190622	2	0.3	62	5.9	69	1.0	48	8.7	67	0.2	65	1.5	63	2.3	53	9.3	54	2.2	58	15	27	142.5	143.4		
134	230775	21-Aug	DEEP170531	1	0.2	61	5.2	70	1.1	60	7.2	69	-0.8	66	0.1	64	0.6	54	2.0	56	2.2	60	15	40	133.1	131.9		
Notes:															Buyer:										Price: \$			
135	230801	23-Aug	GLEN180012	3	0.1	59	4.9	68	2.3	55	8.6	67	0.1	64	1.4	62	1.6	55	1.9	55	2.1	58	13	34	139.4	139.0		
136	230569	12-Aug	DEEP210340	2	0.1	61	3.8	69	0.6	49	6.0	66	0.6	61	1.4	58			8.5	49	1.7	55	15	30	136.0	135.5		
Notes:															Buyer:										Price: \$			
137	230472	10-Aug	GLEN180027	3	0.3	60	5.1	70	0.7	57	8.2	68	0.1	64	0.9	62	1.2	54	2.9	55	2.2	59	22	36	139.4	137.5		
138	230893	9-Sep	DEEP200846	2	0.2	58	5.2	65	0.1	42	8.1	61	0.4	53	1.6	52	2.0	52	7.1	53	1.9	51	16	30	136.5	137.7		
Notes:															Buyer:										Price: \$			
139	230128	30-Jul	DEEP190333	2	0.2	63	4.2	70	1.0	54	5.6	68	0.0	58	1.2	57	0.9	53	2.5	56	1.5	60	18	33	140.6	139.4		
140	230381	7-Aug	DEEP210340	2	0.2	59	3.7	69	-0.1	48	6.1	67	0.5	61	0.9	59			10.2	49	1.2	55	18	32	133.4	132.2		
Notes:															Buyer:										Price: \$			
141	230315	6-Aug	DEEP210340	2	0.3	55	5.1	60	0.2	45	8.1	58	-0.2	53	0.9	52			14.6	46	2.2	50	14	26	132.9	133.2		
142	230355	7-Aug	DEEP210340	2	0.2	58	4.7	69	-0.2	45	7.4	67	0.7	61	1.0	58			11.7	48	2.0	55	14	31	131.3	132.2		
Notes:															Buyer:										Price: \$			
143	230148	30-Jul	DEEP210340	2	0.2	58	4.0	69	0.7	45	7.1	66	0.3	61	1.3	58			10.2	49	2.0	55	12	28	131.7	131.9		
144	230383	7-Aug	DEEP210564	2	0.0	58	5.1	67	1.0	45	7.6	65	-1.4	61	1.0	58			3.8	47	2.6	53	12	28	130.2	130.8		
Notes:															Buyer:										Price: \$			

■ = top 20% for breed

□ = top 10% for breed

LOT	TAG	2023		BT	BWT	acc	WWT	acc	MWWT	acc	PWWT	acc	PFAT	acc	PEMD	acc	YFD	acc	YGFW	acc	PSC	acc	WR	acc	INDEX	INDEX
		DOB	SIRE																							
145	230611	13-Aug	DEEP210340	1	0.2	61	4.0	69	-0.2	46	6.4	66	-0.6	61	0.9	58			13.1	47	1.7	54	13	26	130.5	130.6
146	230384	7-Aug	DEEP210564	2	0.1	58	5.2	67	1.0	45	8.8	65	-0.3	61	1.1	58			4.6	47	3.3	53	12	28	128.1	129.0
Notes:															Buyer:					Price: \$						
147	230695	16-Aug	DEEP170531	1	0.3	63	5.9	70	1.2	56	8.4	68	-0.8	66	0.3	64	0.8	55	5.4	57	1.8	61	15	40	139.3	138.7
148	230223	3-Aug	DEEP170531	3	0.3	64	5.5	69	0.6	58	8.2	68	-0.3	65	0.4	63	1.3	54	6.0	57	2.5	60	15	40	131.2	130.9
Notes:															Buyer:					Price: \$						
149	230221	3-Aug	GLEN180012	2	0.1	62	5.7	69	2.0	55	8.6	67	0.1	65	1.0	63	2.1	54	4.0	56	2.3	59	8	37	135.1	136.7
150	230127	30-Jul	DEEP190333	2	0.1	63	4.0	70	1.0	54	6.5	68	0.5	65	1.5	63	1.2	53	3.4	56	2.2	60	18	33	138.3	137.2
Notes:															Buyer:					Price: \$						

■ = top 20% for breed

□ = top 10% for breed



ALL RAMS IN THE SALE ARE \$SUPERBORDERS\$

THIS MEANS THEY ARE ALL IN THE TOP 50% OF LAMBPLAN TESTED BORDER BORDER LEICESTERS IN AUSTRALIA

Disclaimer: Every effort has been made to produce this catalogue to the best of our knowledge, any discrepancies will be minor and will not affect the working Ram.



SE WINDROWING **& MOWING Pty Ltd**

SERVICING THE SOUTH EAST, WIMMERA & MALLEE REGIONS



***WINDROWING - (SPRAYING AVAILABLE)**
***MOWER/CONDITIONER**

JOSH DOWDY 0407 642 565 OR PHIL SCHINCKEL 0428 391 991

MANAGEMENT OF YOUR NEW RAM

The rams presented have been grown out on spring pasture to be in good working condition. Each ram has recently been drenched and vaccinated. Future management, especially in the next year will influence their productive life in your breeding program. Border Leicester rams are usually younger than other breeds of rams during their first joining due to being spring dropped.

We wish you every success with your purchase and suggest:

- Place new rams in a secure paddock away from older rams and unjoined females until mating. If absolutely necessary to introduce new rams to other rams before mating, try to lessen the risk of injury by confining the group in a small pen, eg. catching pen. Leave for 12-24 hours until more settled before releasing.
- Be aware that Ovine Brucellosis can be transmitted to rams from recently joined females as well as sexually active males.
- Injuries can lead to infection and require prompt treatment with antibiotics (especially lameness.)
- In the interval before mating feed your rams well. Remember semen is manufactured six weeks prior to use. If you are able to supplement your rams' diet with lupins it will improve semen quality.
- Your rams will perform better if they have a short fleece.
- Don't overwork rams in their first season. Preferably put them with older or mixed age ewes.
- After use treat them well, they are your investment for future years. Give regular drenches, 6 in 1 vaccinations, adequate nutrition and regular physical examinations to help ensure a long productive life.

Deepwater stud guarantees that our rams will successfully complete their first breeding season so if you feel a ram has failed to do this please contact us to discuss the matter as soon as possible.

(conditions apply)

If you would like any further advice, please feel free to contact us at any time on 0428 642 065.

NATIONAL SHEEP HEALTH DECLARATION

May 2022

Property Identification Code (PIC) of this property
This MUST be the PIC of the property that
the stock is being moved from

SA172814

Attached to accompanying NVD/Waybill No.

28739604

9. All consigned sheep are from a flock with a negative test for JD? Y N
If Yes, which test? Blood test Date of test 30/2/23

10. Any other JD management practices carried out on the property?
closed flock

11. Any other relevant health information

SECTION A – Biosecurity Information

1. All consigned sheep are from a Livestock Production Assurance (LPA) accredited property? Y N

2. The number of different sources of sheep that have been introduced onto the consignment property in the last 5 years is:

0 (closed flock) 1-5 6+ Rams Only

SECTION B – Animal Health Information

3. All consigned sheep are from a flock that is free of virulent footrot? Y N

4. All consigned sheep are from a flock that is free of benign footrot or scald? Y N
If (N) please provide further information below

5. All consigned sheep are from a flock that is free of lice? Y N

6. All consigned sheep are from a flock in an ovine brucellosis accreditation scheme? Y N

If Yes, Flock Accreditation No. (except Qld) 372 Expiry Date 30/2/25

7. All consigned sheep are Johne's disease (JD) Approved Vaccinates? Y N

If Yes, I have been continuously vaccinating all retained lambs in the consignment flock against JD for 15 years. *(Vendor-bred sheep only)*

8. All consigned sheep are from a SheepMAP flock? Y N

If yes, Status M3V Year commenced 1994 Certificate Number S016V

*See explanatory notes on back page for further information

SECTION C – Treatment Information of Consigned Sheep

Treatment type	Product	Date of last treatment
External Parasite Treatment	Coopers blowfly & lice	30/6/24
Internal Parasite Treatment	Wicket	9/9/24
Other treatments	7in1 Glenary B12	9/9/24
Vaccination (other than JD)		

Declaration (see explanatory notes for further information)

I, Josh Dowdy 38 Moalyella rd
(Full name) (Address)
Binnun | SA 5262
(Town/suburb) (State) (Postcode)

Tel. No. (0)407642565 Email josh.dowdy@icloud.com

declare that, I am the owner and/or person responsible for the husbandry of the sheep in this consignment and all the information on this Sheep Health Declaration is true and correct:

Signature Dowdy Date 4/10/24

Producers are advised to retain appropriate records to support this declaration. Persons making false statements may be liable under fair trading and other relevant state legislation.

NATIONAL VENDOR DECLARATION (SHEEP AND LAMBS) AND WAYBILL

S0720

28739604

Part A To be completed by the owner or person who is responsible for the husbandry of the sheep or lambs.

Owner of sheep or lambs JD RJK Dowdy (FULL TRADING NAME)

Property/place where the journey commenced 38 Moolyella rd (ROAD ADDRESS)

Binnum SA (TOWN/SUBURB) (STATE)

Property Identification Code (PIC) of this property
This MUST be the PIC of the property that the stock is being moved from **SA172814**

Description of sheep or lambs

Number	Year born (DOB)	Description (BREED, SEX & TYPE E.G. CROSSBRED, WETHER, LAMB)	Month of shearing	PIC or Brand on Ear Tags (IF DIFFERENT TO PIC SHOWN ABOVE)	Earmarks (IF PRESENT OR REQUIRED)
150	2023	Border Rams	July		
150	Total	Use the Attachment Forms for consignments that require more lines to describe the stock. (See Explanatory Notes)			

A. Have PICs on all of the NLIS tags only on sheep in this consignment been listed in the Description table above (other than the PIC printed on this NVD)? - Yes OR

B. Have all sheep in this consignment been tagged with an NLIS tag with the PIC printed on this NVD or the associated WA brand as listed in the description table above - Yes AND/OR

Number of electronic NLIS devices in this consignment 24

Hours off feed and water before transporting 24 hours

Consigned to Nutrien Naracoorte (NAME OF PERSON OR BUSINESS)

(ADDRESS) (TOWN/SUBURB) (STATE)

Destination (if different) of sheep or lambs (LOCATION ADDRESS)

Destination PIC (REQ: WA & TAS)

Details of other statutory documents relating to this movement e.g. health statement

DOCUMENT TYPE NUMBER OFFICE OF ISSUE EXPIRY DATE

1 Have these sheep or lambs been raised consistent with the rules of an independently audited QA program on the property the PIC of which is shown above?

Yes No If Yes, give details: _____

2 Have all the sheep or lambs in this consignment been treated with a Scabby Mouth Vaccination either at marking or at least 14 days prior to their presentation for sale?

Yes No

3 Were all of these sheep or lambs bred by the owner or vendor?

Yes No If No, how long ago were the sheep or lambs obtained or purchased? (If purchased at different times, tick the box corresponding to the time of the most recent purchase.)
A. Less than 2 months B. 2-6 months C. 6-12 months D. more than 12 months

4 Are any of the sheep or lambs in this consignment still within a Withholding Period (WHP) or Export Slaughter Interval (ESI) as set by APVMA or SAFEMEAT, following treatment with any veterinary drug or chemical?

Yes No If Yes, give details: (Record additional details in question 7)
CHEMICAL PRODUCT _____ DATE APPLIED / /20 WHP _____ ESI (IF SET) _____

5 In the past 60 days, have any of the sheep or lambs in this consignment consumed any material that was still within a withholding period when harvested, collected or first grazed?

Yes No If Yes, give details:
CHEMICAL PRODUCT _____ DATE APPLIED / /20 GRAZING WHP _____ DATE FIRST FED/GRAZED / /20 DATE FEEDING/GRAZING CEASED / /20

6 Have the sheep or lambs in this consignment ever in their lives been fed feed containing animal fats? (See Explanatory Notes) Saudi & Russian eligible.

7 Please include any additional information below eg: vaccination programs, animal health certification, additional declarations, etc.

Declaration

I Josh Dowdy 38 Moolyella rd
FULL NAME FULL ADDRESS

Binnum SA 5262
ADDRESS CONT.



declare that, I am the owner or the person responsible for the husbandry of the sheep or lambs and that all the information in part A of this document is true and correct. I also declare that I have read and understood all the questions that I have answered, that I have read and understood the explanatory notes, and that, while under my control, the sheep or lambs were not fed restricted animal material (including meat and bone meal) in breach of State or Territory legislation.

Signature* J Dowdy Date* 4 / 10 / 2024

*Only the person whose name appears above may sign this declaration, or make amendments which must be initialed.

Tel no. 0407642565 Fax no. _____

Email. joshdowdy@icloud.com

Part B To be completed by the person in charge of the sheep or lambs while they are being moved. Completion of this part is optional in SA and VIC.

Movement commenced: / /20 : : (am/pm)

Vehicle registration number(s): _____

I _____ am the person in charge of the sheep or lambs during the movement and declare all the information in Part B is true and correct.

Signature _____ Date / /20 Tel no. _____

*When more than one truck is carrying the sheep or lambs, other vehicle registration numbers are to be recorded.

*Agriculture
is woven through*
OUR DNA

Our people have a deep knowledge of agriculture right across the supply chain, and with many being from the land, they don't just understand farming, they live and breathe it.



Call your local Mount Gambier
team on **08 8726 2500**





Return Address:

Deepwater Border Leicester Stud

J.D & J.K Dowdy

P.O Box 28 BINNUM S.A. 5262